

Sirata Beach Resort Project

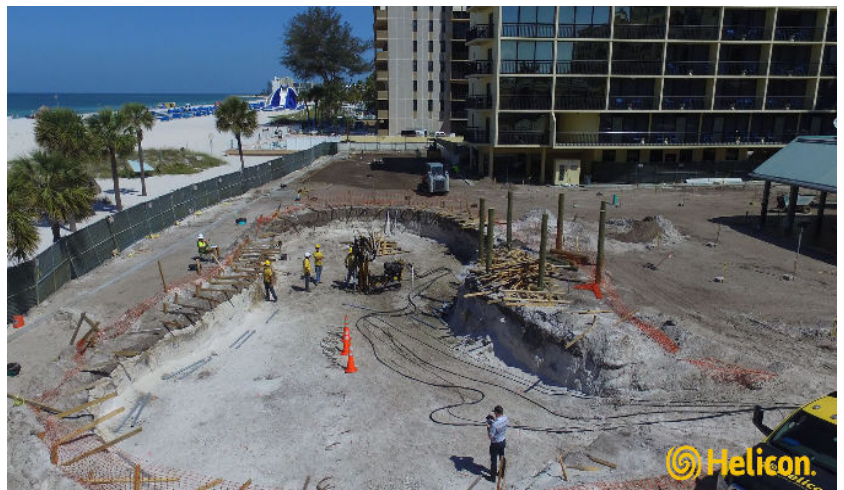
PRE-CONSTRUCTION HELICAL PIERS PROJECT

Project

The project is a commercial resort pool in need of pre-construction helical piers for the main pool and pool deck area.

Challenge

- Soil conditions in FEMA flood zone



Solution

Helicon worked alongside the geotechnical design team to develop a pre-construction helical pier program designed to meet the building code load criteria. The helical pier system was installed to a competent bearing stratum as defined by the engineer. A total of 56 helical piers were installed during the course of this project. The helical piers were installed below the surface for a running average of 12 ft below existing wall footing elevation. The helical piers were documented to have sufficient uplift resistance capacity, as measured and correlated by installation torques for the helical piers. Efficient planning & coordination was key to overcoming the challenges & limitations. Helicon collaborated with the Geotechnical Engineer of Record throughout the work and confirmed all recommended criteria were followed.

Client: T & G Constructors
Engineer: ECS Florida
Market: Commercial
Solution: Deep Foundations
Services: Helical Piers

844-HELICON
HeliconUSA.com