

Ocala Community Center Project

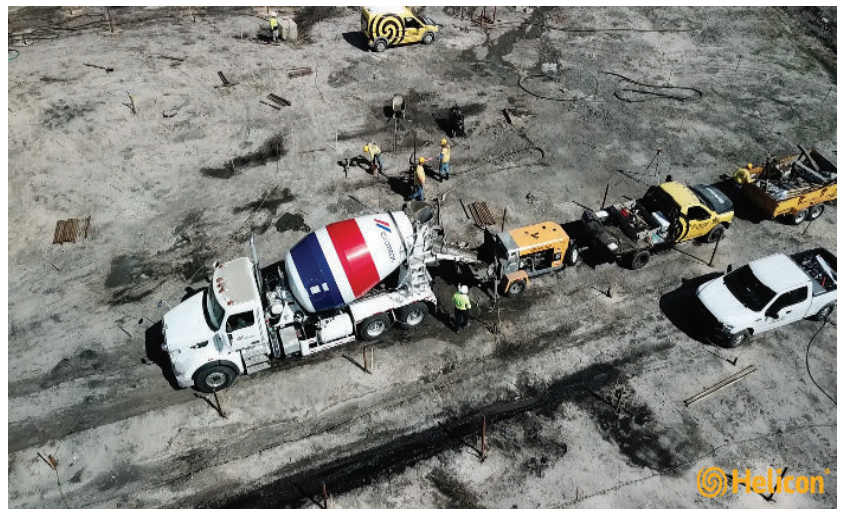
COMPACTION GROUT PROJECT

Project

The project is new construction two story community center building (Mary Sue Rich Community Center) located in the City of Ocala. The building is to be 30 ft tall with a footprint of approximately 33,000 sq ft. The proposed building was in need of ground improvement before the construction of the building commenced.

Challenge

- A soft clayey sand stratum was located directly above the limestone. Cover over the limestone varied from no cover to 28 ft.



Solution

The engineer of record recommended a ground improvement plan that consisted of approximately 1,500 cubic yards of compaction grout injected at an average depth of 25 ft. per injection point. Primary injection points were installed in about a 15 ft triangular pattern beneath the proposed building plus one row of grout injections beyond the perimeter. Secondary injection points were placed at mid-distances between primary injection points. Ground injection pipes were installed to the surface of the rock and then incrementally withdrawn at 2 ft intervals while pumping low-slump grout.

Client: R.L. Burns Inc.
Engineer: Terracon Consultants
Market: Commercial
Solution: Ground Improvement
Services: Compaction Grout

844-HELICON
HeliconUSA.com